

## Newsletter: January 2020

### In This Issue:

- **Next Meeting Date – 25 February**
- **Welfare Book & Contacts**
- **Guest Speaker**
- **Tour**
- **Entertainment**
- **Newsy Items**
- **Quiz's, Jokes & Quote**
- **Barefoot Bowls Photos**
- **Calendar for 2020**

### Next Meeting: 25 February, 2020

**Aspley Hornets Football Club**, 50 Graham Road, Carseldine Ph: 3263 5522. Carpark opens at 9.00 am and **doors open for the meeting at 9.15 am so we recommend you do not arrive early.** You do not need to be a member of the club. Everyone now must park in the second carpark at the back. Entry will be through the coffee shop door. Thank you for your co-operation.

### Welfare:

Please enter details of any fellow member you know who is ill, hospitalised or deceased of a recent date in the **book**. Could you please write in the reason against the name so we know? Our committee will take it from there. **Feel free to ring Dianne to let her know if someone is ill and she can send them a card.** **Contact Welfare Officer: Dianne Beazley on 3263 7768.**

**Guest Speaker:** The guest speaker for February will be The Guide Dogs. They are bringing a dog and will talk about how they train the dogs.

### Contacts:

**President:** Betty Vann 0421 335323 **V/President:** Graeme Hayes 3425 1176

**Secretary:** Judy Tuckett 3865 8941 **Treasurer:** Des O'Bryan 0418 256779

**New Members:** Sue Garry 0407 951901 **Entertainment:** Linda Doxey 3863 0392

**Editor:** Pam Martin 0408 449668 **Email:** martin04@bigpond.net.au



## *Future Tours*

### **March Tour – Empire Theatre – Toowoomba**

Today we will travel to Toowoomba to visit the heritage listed Empire Theatre. This building has been carefully restored to its 1933 origin.

We will be treated to –

- A complete tour of the Theatre including Back Stage areas and Function Rooms
- The history including some amusing and interesting stories of the early years
- A Sound & Light Show inside the auditorium
- Tea, Coffee and Biscuits, served in one of our many attractive function areas.

At the conclusion of our tour we will board the coach and move on to Club Glenvale (a local sports club) for a two-course lunch.

The trip back to Aspley will round off what should be a very interesting day.

**Date:** Tuesday, 17<sup>th</sup> March  
**Departing:** Aspley Hornets Football Club at 8.00 am  
(Park at back near Football Field)  
**Lunch:** Club Glenvale  
**Cost:** \$55.00

### **NAMES TODAY PLEASE**

**Contact: Allan or Jan 3869 1424 or 041 7773330**

### **COACH TOUR TERMS & CONDITIONS**

- 1 You must be at the nominated departure point 10 minutes prior to departure.
- 2 No refunds are given unless we are notified 72 hours before departure time.  
(Except for extenuating circumstances)
- 3 Coaches will leave at the departure time advertised for the particular tour.

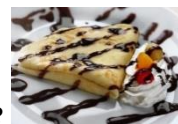
## **Entertainment**



### **Sausage Sizzle**

A sausage sizzle will be held on **Tuesday 4<sup>th</sup> February** at Crockatt Park, Woody Point opposite the Belvedere Hotel, Cnr Oxley Avenue & Woodcliffe Crescent. Come along and enjoy a fun time getting to know other people in the club. BBQ served at 11.30 am. **Cost \$4.00 per person.**

## Crepe Café – Wednesday 12 February – Aspley Homemaker Centre



A morning tea will be held on **Wednesday 12<sup>th</sup> February at 9.30 am**. If interested please let Linda know. It will be just pay on the day for what you order. Come along for a chat, cuppa and a delicious crepe.

## Newsy Items

### Birthdays Celebrated in January:



Desley Schafer  
Jennifer Boizard  
Roger Elworthy  
Kevin Schuh  
Karen Price

Bruce Bricknell  
Dianne Beazley  
Eileen Leavis  
Kath Morgan  
Shirley Pavey

Norman Schweers  
Des O'Bryan  
Judy Clanton  
Lynn Vowels

Susan Garry  
Bruce Kerrison  
Bonnie Argent  
Eileen Slade

### Wedding Anniversaries for January:



Congratulations to the following couples celebrating their wedding anniversaries.

Aldo & Rita Astori

Bob & Marie Morrissy

### Get Well Soon:

Wishing all our members who are not feeling well a speedy recovery.

## Quiz's:

### African Countries

E	G	Y	P	T	Z	A	I	S	I	N	U	T	R
O	C	A	M	E	R	O	O	N	C	H	A	D	A
I	M	C	R	Z	C	Z	I	M	B	A	B	W	E
R	A	N	A	W	S	T	O	B	O	U	E	D	E
E	L	U	A	L	G	E	R	I	A	A	U	N	N
O	I	T	N	S	I	A	I	R	E	G	I	N	O
C	G	U	I	N	E	A	O	A	E	E	A	A	E
C	M	E	R	K	R	W	A	N	D	A	I	O	L
O	L	E	W	A	E	U	O	I	I	L	B	I	A
R	N	A	D	U	S	N	A	M	O	R	M	W	R
O	A	Y	B	I	L	A	Y	Y	C	U	A	A	R
M	I	Y	A	E	N	A	C	A	G	S	Z	L	E
A	M	A	D	A	G	A	S	C	A	R	O	A	I
M	A	U	R	I	T	I	U	S	R	E	G	M	S

GUINEA  
ZIMBABWE  
KENYA  
CAMEROON  
TUNISIA  
NIGERIA  
SIERRA LEONE  
RWANDA  
LIBYA  
ALGERIA  
BOTSWANA  
MAURITIUS  
MADAGASCAR  
MOROCCO  
ZAMBIA  
CHAD  
SUDAN  
MALAWI  
MALI  
EGYPT

Play this puzzle online at : <http://thewordsearch.com/puzzle/23/>

9		7						
4				8	9	6		
		5		1		8	9	
	3		9		5	2		
		2	6		3		7	
	2	8		3		9		
		4	1	6				3
						5		8

Daily SuDoku: Tue 14-Jan-2020

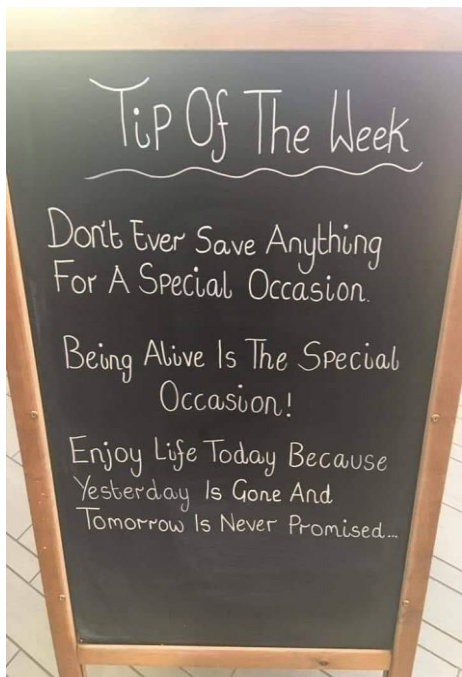
medium

(c) Daily Sudoku Ltd 2020. All rights reserved.

18	25	7	10	24	12		17	8	26	23	23	25	24	12	
7		25		20				14		24		14		2	
17	2	25	2	6	7		26	19	9	19	14	1	W	19	17
2		14		26				9		12		11	D		9
6	14	1	7	12	11	2	6	24		24	18	14	19	15	
			24		17		18		15				1		
8	2	11	1	2	16	24	17				4	2	19	6	13
14				14		20		22			7				26
5	7	23	7	19			22	26	14	3	2	24	19	3	
			12				21		7		24		26		
8	7	2	10	24		26	19	11	24	4	2	19	24	11	
14		8		21		19				26		26		12	
3	12	7	16	24	17	3	15			6	25	14	6	13	24
24		6		6		7				25		13		7	
3	12	24	7	3	2	17	24			23	15	5	17	26	8

1	2	3	4	5	6	7	8	9	10	11	12	13													
14	15	16	17	18	19	20	21	22	23	24	25	26													
A	B	C	D	E	F	G	H	I	J	K	L	M	N	O	P	Q	R	S	T	U	V	W	X	Y	Z

**Jokes & Quote:** 



## **Satnav – A Poem by Pam Ayres.**

I have a little Satnav, it sits there in my car.  
A Satnav is a driver's friend it tells you where you are.  
I have a little Satnav; I've had it all my life.  
It's better than the normal ones, my Satnav is my wife.

It gives me full instructions, especially how to drive "It's sixty miles an hour", it says, "You're doing sixty five".  
It tells me when to stop and start, and when to use the brake And tells me that it's never ever, safe to overtake.

It tells me when a light is red, and when it goes to green It seems to know instinctively, just when to intervene.  
It lists the vehicles just in front, and all those to the rear.  
And taking this into account, it specifies my gear.

I'm sure no other driver, has so helpful a device.  
For when we leave and lock the car, it still gives its advice.  
It fills me up with counselling, each journey's pretty fraught.  
So why don't I exchange it, and get a quieter sort?

Ah well, you see, it cleans the house, makes sure I'm properly fed.  
It washes all my shirts and things, and keeps me warm in bed!  
Despite all these advantages, and my tendency to scoff, I only wish that now and then, I could turn the bugger off.

**Lexophile" describes those who have a love for words, such as "you can tune a piano, but you can't tuna fish", "To write with a broken pencil is pointless." An annual competition is held by the New York Times to see who can create the best original lexophile. These are just a few of them.**

### **This year's submissions:**

**I know a guy who's addicted to drinking brake fluid, but he says he can stop any time.**

**A thief who stole a calendar got twelve months.**

**I got some batteries that were given out free of charge.**

**A dentist and a manicurist married. They fought tooth and nail.**

**A will is a dead giveaway.**

**Did you hear about the fellow whose entire left side was cut off? He's all right now.**

**He had a photographic memory but it was never fully developed.**

**Did you hear about the crossed-eyed teacher who lost her job because she couldn't control her pupils?**

**I stayed up all night to see where the sun went, and then it dawned on me.**

**I'm reading a book about anti-gravity. I just can't put it down.**

**Quote:** The New Year stands before us, like a chapter in a book, waiting to be written.

We can help write that story by setting goals. **Melody Beattie**





## ***Barefoot Bowls Day***

A fun morning was enjoyed by members in January. A few photos of our members participating in the morning activity.

